



Worcester
CITY COUNCIL

HEALTH AND WELLBEING COMMITTEE

SUPPLEMENTARY AGENDA

Date: Thursday, 29th July, 2021

Time: 7.00 pm

Venue: Guildhall

HEALTH AND WELLBEING COMMITTEE

Information for Members of the Public

Access to the Guildhall is via the front entrance in the High Street. The nearest car park is Copenhagen Street (pay and display). If you are a wheelchair user or have restricted mobility, access to the Guildhall can be gained either through the door on the right side of the forecourt as you face the Guildhall, or through the sliding doors at the rear of the Guildhall. There is dedicated disabled parking space at the rear (access via Copenhagen Street). Most meetings are held on the ground floor, which can be reached by using a lift. If you are a wheelchair user or have restricted mobility and you wish to attend a meeting, please telephone or email the officer mentioned below in advance and we will make any necessary arrangements to assist your visit.

Part I of the Agenda includes items for discussion in public. You have the right to inspect copies of Minutes and reports on this part of the Agenda as well as background documents used in the preparation of these reports. Details of the background papers appear at the foot of each report. Part II of the Agenda (if applicable) deals with items of 'Exempt Information' for which it is anticipated that the public may be excluded from the meeting and neither reports nor background papers are open to public inspection.

Please note that this is a public meeting and members of the public and press are permitted to report on the proceedings. "Reporting" includes filming, photographing, making an audio recording and providing commentary on proceedings. Any communicative method can be used to report on the proceedings, including the internet, to publish, post or share the proceedings. Accordingly, the attendance of members of the public at this meeting may be recorded and broadcast. By choosing to attend this public meeting you are deemed to have given your consent to being filmed or recorded and for any footage to be broadcast or published.

Please note the Council records and live streams many of its meetings. These recordings are published on the relevant meeting pages of the Council's website. A notice to this effect will be posted in the meeting room. If a member of the public chooses to speak at a meeting of the City Council he/she will be deemed to have given their consent to being recorded and audio being published live to the Council's website. The Chairman of the meeting, can at their discretion, terminate or suspend recording, if in their opinion, continuing to do so would prejudice the proceedings of the meeting or if they consider that continued recording might infringe the rights of any individual, or breach any statutory provision.

At the start of the meeting under the item 'Public Participation' up to fifteen minutes in total is allowed for members of the public to present a petition, ask a question or comment on any matter on the Agenda. Participants need to indicate that they wish to speak by 4.30 p.m. on the last working day before the meeting by writing, telephoning or E-Mailing the officer mentioned below.

If you have any general enquires or queries about this Agenda or require any details of background papers, further documents or information, or to discuss arrangements for the taking of photographs, film, video or sound recording please contact the Lead Officer, Julian Pugh, Democratic Services Administrator, Guildhall, Worcester WR1 2EY. Telephone: 01905 722027 (direct line); E-Mail Address: committeeadministration@worcester.gov.uk.

This agenda can be made available in large print, braille, on PC disk, tape or in a number of ethnic minority languages. Please contact the above named officer for further information.

Agendas and minutes relating to all City Council Committees and Council Meetings are also available electronically, click on the option "Committee Minutes and Documents", Website Address: worcester.gov.uk

Health and Wellbeing Committee
Thursday, 29 July 2021

Members of the Committee:-

Chair: Councillor Louise Griffiths (C)
Vice-Chair: Councillor Lynn Denham (L)

Councillor Allah Ditta (C)
Councillor Mrs. Lucy Hodgson (C)
Councillor Stephen Hodgson (C)
Councillor Mike Johnson (C)
Councillor Karen Lawrance (LD)

Councillor Steve Mackay (C)
Councillor Robyn Norfolk (L)
Councillor Jabbar Riaz (L)
Councillor Richard Udall (L)

C = Conservative G = Green L = Labour LCo = Labour and Co-operative
LD = Liberal Democrat

SUPPLEMENTARY AGENDA

Part 1
(ITEMS FOR DISCUSSION AND DECISION IN PUBLIC)

5. Joint Working Opportunities with Worcester City Primary Care Network

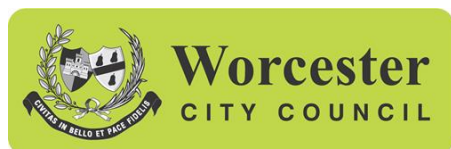
Page(s): 1 - 6

Ward(s): All Wards

Contact Officer: Lloyd Griffiths, Corporate Director, Homes and Communities
Tel: 01905 722314

That the Committee notes the contents of this report, and in particular the increased level of joint working with Worcester City Primary Care Network.

This page is intentionally left blank



Report to: Health & Wellbeing Committee, 29th July 2021

Report of: Corporate Director (Operations, Homes & Communities)

Subject: JOINT WORKING OPPORTUNITIES WITH WORCESTER CITY PRIMARY CARE NETWORK

1. Recommendation

That Committee -

1.1 Note the contents of this report, and in particular the increased level of joint working with Worcester City Primary Care Network.

2. Background

- 2.1 At its last Committee, Members heard from Susan Harris (Executive Director of Strategy and Partnerships - Herefordshire & Worcestershire Health & Care NHS Trust) on the work being undertaken across the wider health and social care system to develop an Integrated Care System for Herefordshire & Worcestershire which would replace the current Sustainability & Transformation Plans.
- 2.2 Multi-agency conversations in respect of this transition planning have enabled officers of the council to develop new relationships with agencies and organisations around the health & well-being agenda. One of these is with the Worcester City Primary Care Network (PCN).
- 2.3 Currently NHS Herefordshire & Worcestershire Clinical Commissioning Group (CCG) is made up of a membership of 83 GP practices across Herefordshire and Worcestershire. These practices have joined together into 10 Primary Care Networks which consist of groups of general practices working together with a range of local providers, including across primary care, community services, social care and the voluntary sector, to offer more personalised, coordinated health and social care to their local population. Networks are based around populations of 30,000 to 50,000.
- 2.4 Worcester City PCN is an alliance of 10 GP Surgeries across Worcester City, that have just over 126,000 registered patients. Its Clinical Director is Dr Nicole Burger and its surgeries include –

Severn Valley Medical Practice	Spring Gardens Group Medical Practice	Barbourne Health Centre	Farrier House Surgery	St Johns Surgery
Albany House Surgery	Elbury Moor Medical Centre	Thornloe Lodge Surgery	Haresfield Surgery	St Martins Gate Surgery

- 2.5 **Appendix 1** of this report includes both an illustration of the 11 PCNs across Worcestershire, and a more detailed map of the Worcester City Primary Network.
- 2.6 In order to support a better understanding of each others priorities and where linkages and overlaps exist officers have shared key documents such as the Worcester City Plan (2016 – 2021) and the COVID-19 Community Recovery Plan. Conversely colleagues from Worcester City PCN have talked through their annual priorities for 2021/2022 many of which are set nationally by the NHS.
- 2.7 Through these conversations it has become clear that there are many opportunities to collaborate on existing and new projects and this report will set out several of these for Committee's information.

3. Information

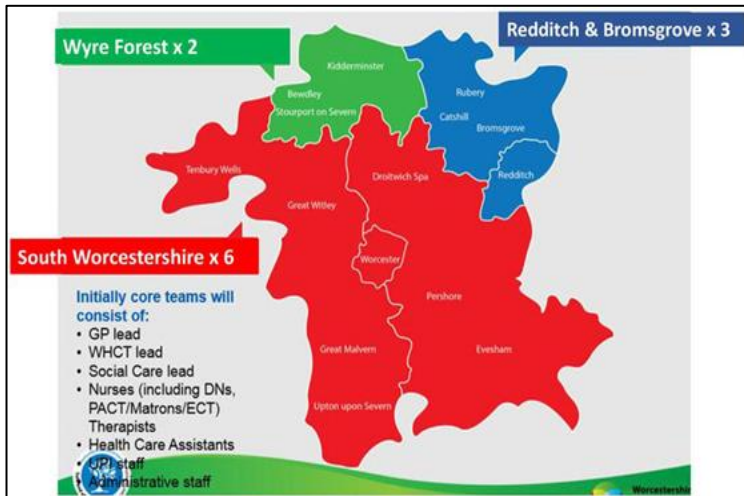
- 3.1 In regards to the response to COVID-19 and in particular the call from Government to support rough sleepers through 'Everyone In', strategic housing leads across District Councils worked with PCN colleagues in order to vaccinate rough sleepers in line with national guidance due to many of them having pre-existing health conditions which made them more vulnerable to the virus. This was successfully delivered at St Pauls Hostel and The Fownes Hotel through the excellent work of Worcester City PCN staff with support from colleagues at the CCG, with the Districts playing a key enabling role.
- 3.2 Furthermore, at the outset of 'Everyone In' a significant step was made with rough sleepers being provided access to medical assessments and treatment with PCN colleagues visiting rough sleepers at The Fownes Hotel. Moving forward it has been identified that with the level of personal support now being provided to rough sleepers who have transitioned from the street and into housing first or temporary accommodation, and with the level of outreach being provided to those who remain on the street we can assist our GP surgeries in being able to follow up on rough sleepers particularly in respect of issues such as prescribed medication management.
- 3.3 Colleagues from the PCN have been key colleagues on the Worcester City COVID-19 Incident Management Team Meetings. They have played a pivotal role in the City being able to deliver 3 targeted pop up vaccination centres (King George V Hub x 1, Guildhall x 2) being set up around the City during May and June to promote and increase vaccination uptake in those areas of the City where rates were lowest, and more recently in targeting younger people in line with the Government's Joint Committee on Vaccination and Immunisation (JCVI) guidance. These centres due to their location and ease of access, have provided first vaccinations to over 1400 people who may otherwise would not have received the vaccine or would have waited longer to have received it if trying to access one of the bigger sites.
- 3.4 Worcester City PCN have commissioned Onside to provide Social Prescribers and Lifestyle Advisors to support their patients. Onside are a charity working across Worcestershire and Herefordshire and provide a range of support and services to ensure fairness and equality for adults who may be vulnerable, disadvantaged or discriminated against. This includes mental and physical ill health, sensory impairment, learning disability, drug and alcohol misuse, older people, and carers.

- 3.5 It has been recognised that Social Prescribers in particular can support the work of many of the Council's core team including Housing, Environmental Health and Community Services who are regularly dealing with matters where at the centre there is a person or a family who are facing challenges and who would benefit from an extra level of help that focusses on them and their health and well-being in the widest sense of the term. Discussions have commenced about Social Prescribing colleagues spending some time each week alongside Housing Officers at our Trinity Street Housing Advice Centre so that we are able to quickly signpost residents and deal with challenges in a more holistic manner.
- 3.6 Discussions have also commenced in respect of reintroducing a scheme traditionally referred to as 'Exercise by Prescription'. It is acknowledged that across the City there are significant differences in the health status of some of our communities the causation of which is multi-faceted, with the COVID-19 Pandemic having exacerbated some of those. Nationally physical fitness levels in adolescents and children are declining, while the incidence of obesity is increasing.
- 3.7 Worcester City GP Surgeries, particularly the Onside Lifestyle Advisors are in a unique position to be able to discuss the health benefits of regular physical activity with their patients during the consultation. Council officers along with PCN and Freedom Leisure colleagues are actively discussing a proposal to take this one step further so that where it is deemed medically appropriate there is the ability to offer a prescription for a course of physical activity to a local leisure centre or community activity centre.
- 3.8 With Diabetes being one of the PCNs key priorities, discussions have commenced about running a series of mobile diabetes clinics focussed on those areas of the City where there are lower rates of access to health care. Based on the relative success of the pop-up vaccination centres it is felt that offering such clinics in a location recognised as a community facility will again encourage people to attend who may not have necessarily done so.
- 3.9 The council through its Disabled Facility Grants work and in particular The Promoting Independent Living Contract provided by Milbrook, plays a key role (through adaptations) in keeping older people safer at home, and enabling people to return home from hospital where adaptations are required. Older peoples health and in particular 'prevention falls' is another area where there is an opportunity to collaborate and discussions have commenced regarding making best use of an Occupation Therapist role intending to be recruited by the PCN. As a council it would be prudent to support our GPs where a patient has been identified as requiring adaptations within their property because of an existing or developing condition and make best use of the processes and system that already existing in respect of disabled facility grants and access to contractors etc.
- 3.10 This report has discussed the early opportunities that have been taken to work more closely with the Worcester City PCN, but more importantly it is hoped, has highlighted the further opportunities that exist to support our residents and in turn continue to strengthen the relationship between the council and Worcester City PCN. The council does not have single role in this but rather a range of roles such as its assets (building or people), the services it delivers that link so closely with health & wellbeing, and its reach and influence within the communities it serves.

Ward(s): All
Contact Officer: Lloyd Griffiths (Corporate Director (Operations, Homes & Communities)
lloyd.griffiths@worcester.gov.uk / 01905 722371
Background Papers: None

Appendix 1

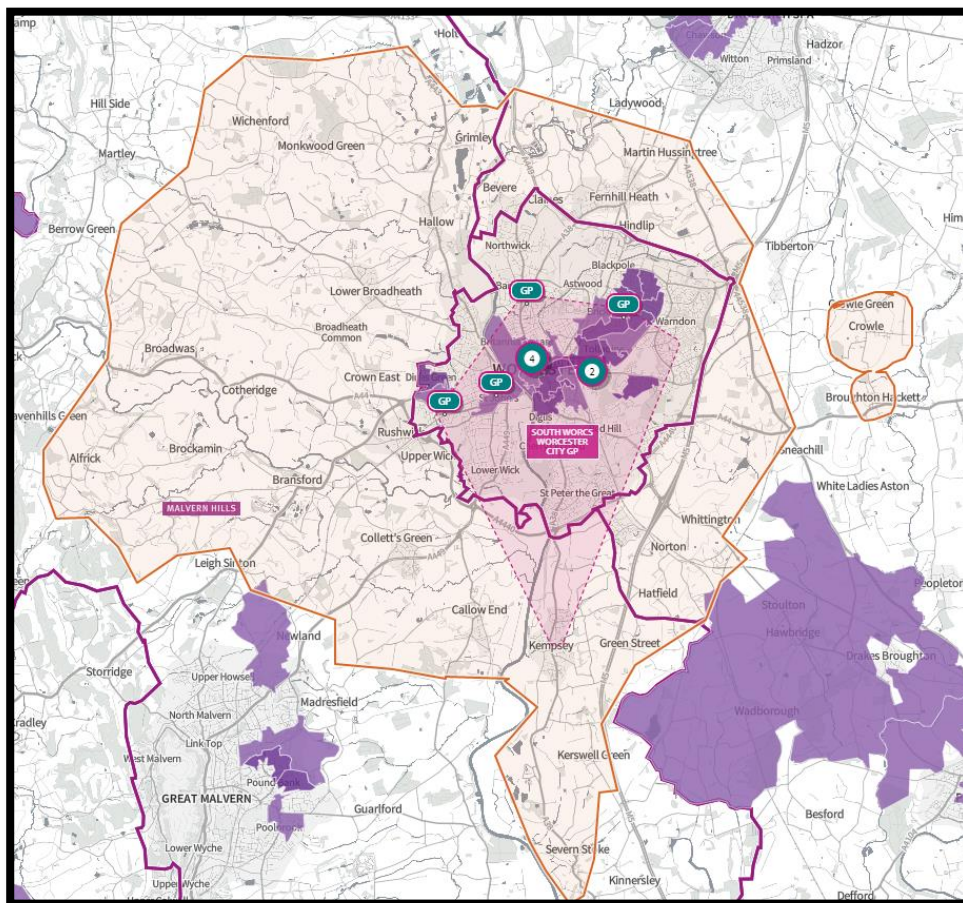
Worcestershire Primary Care Networks



10 PCNs across Worcestershire include –

- Bromsgrove & District
- Droitwich & Ombersley
- Vale of Evesham (EBBI)
- Kingfisher (Redditch)
- Malvern Town PCN
- Nightingale
- Upton & Pershore
- Worcester City GP Network
- Wyre Forest Health Partnership
- Wyre Forest Network of Independent Practices

Worcester City Primary Care Network



This page is intentionally left blank